



London Borough of Hammersmith & Fulham | The Royal Borough of Kensington and Chelsea | Westminster City Council

# TRI-BOROUGH YOUTH OFFENDING SERVICES



## Presentation content:

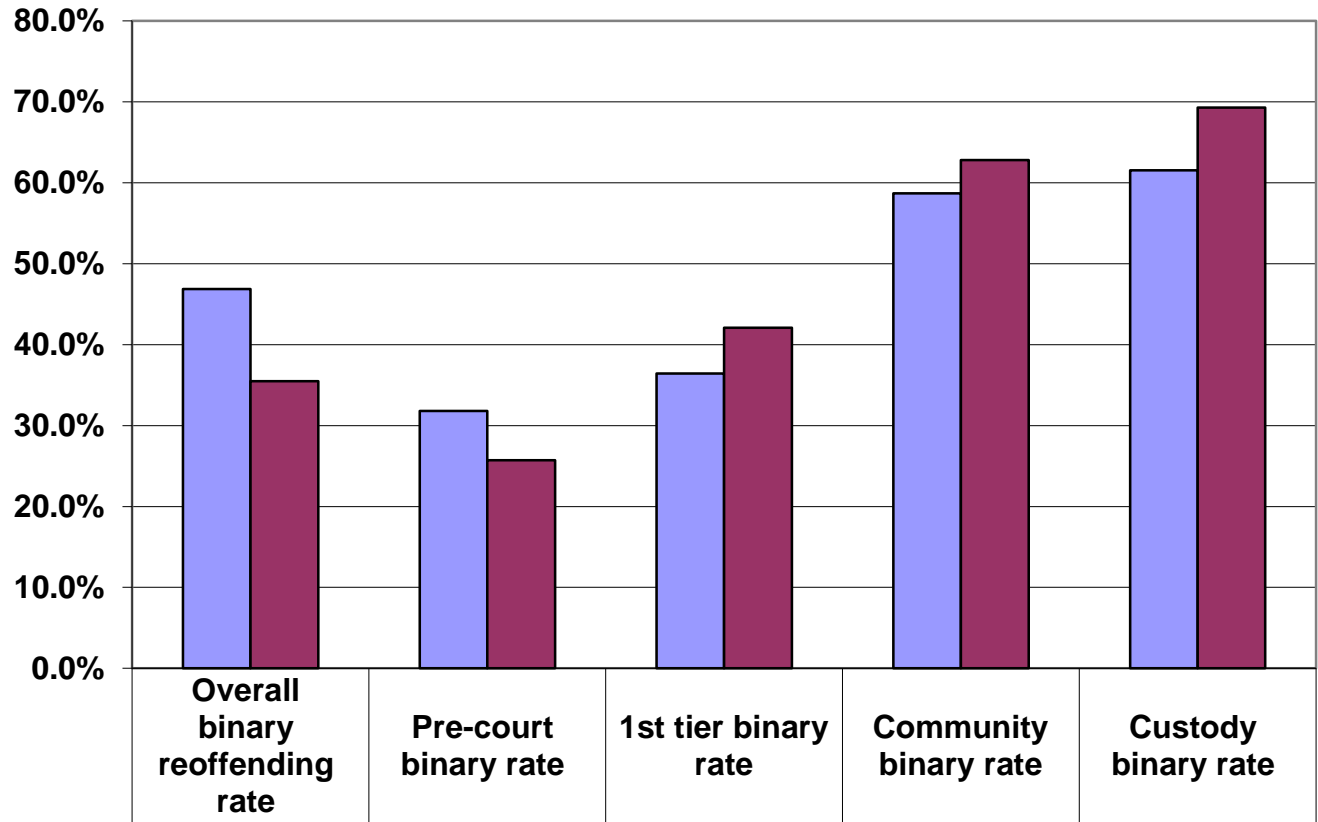
- 1) Demonstrate local use of YJB reoffending toolkits
- 2) Reoffending rates from a Tri-borough perspective



# Local and National binary rate, overall and by tier of intervention.

April 11 - March 12 Cohort

■ Local performance (based on local YJMIS data)
 ■ National performance (based on PNC data)\*

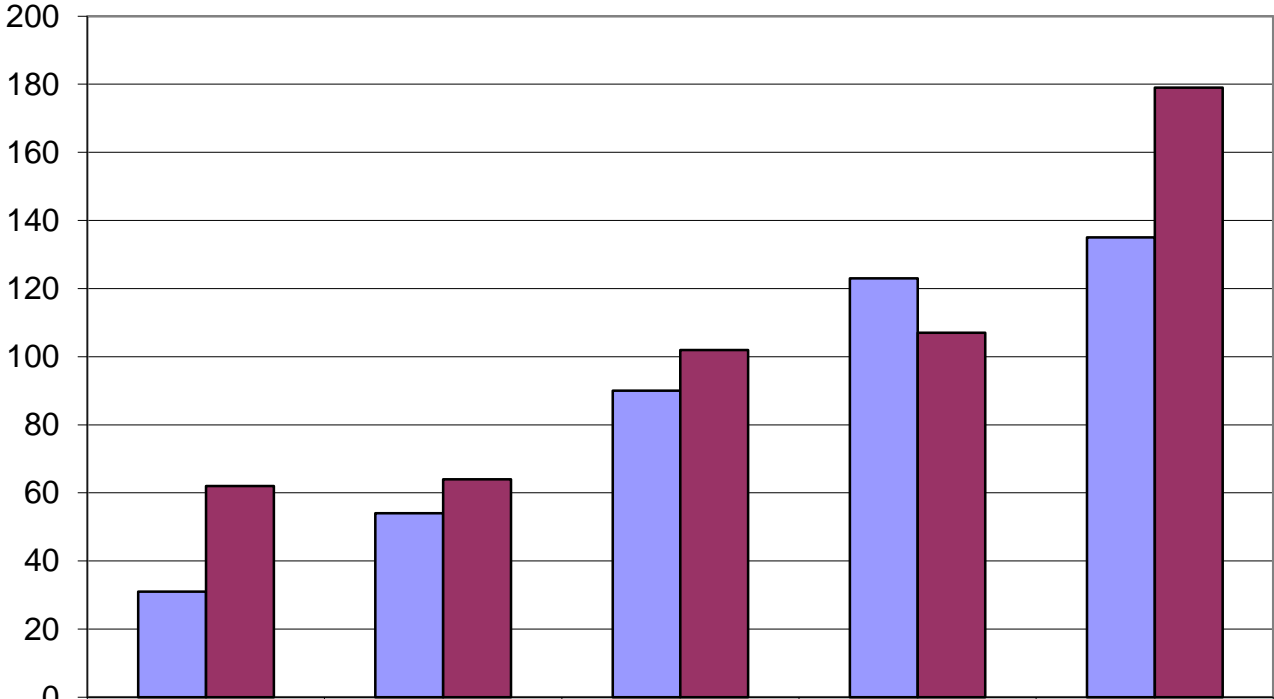


<span style="color: blue;">■</span> Local performance (based on local YJMIS data)	46.9%	31.8%	36.4%	58.7%	61.5%
<span style="color: maroon;">■</span> National performance (based on PNC data)*	35.5%	25.7%	42.1%	62.8%	69.3%

# Age & Re-offending

■ Young People
 ■ Offences

Numbes of young people & offences

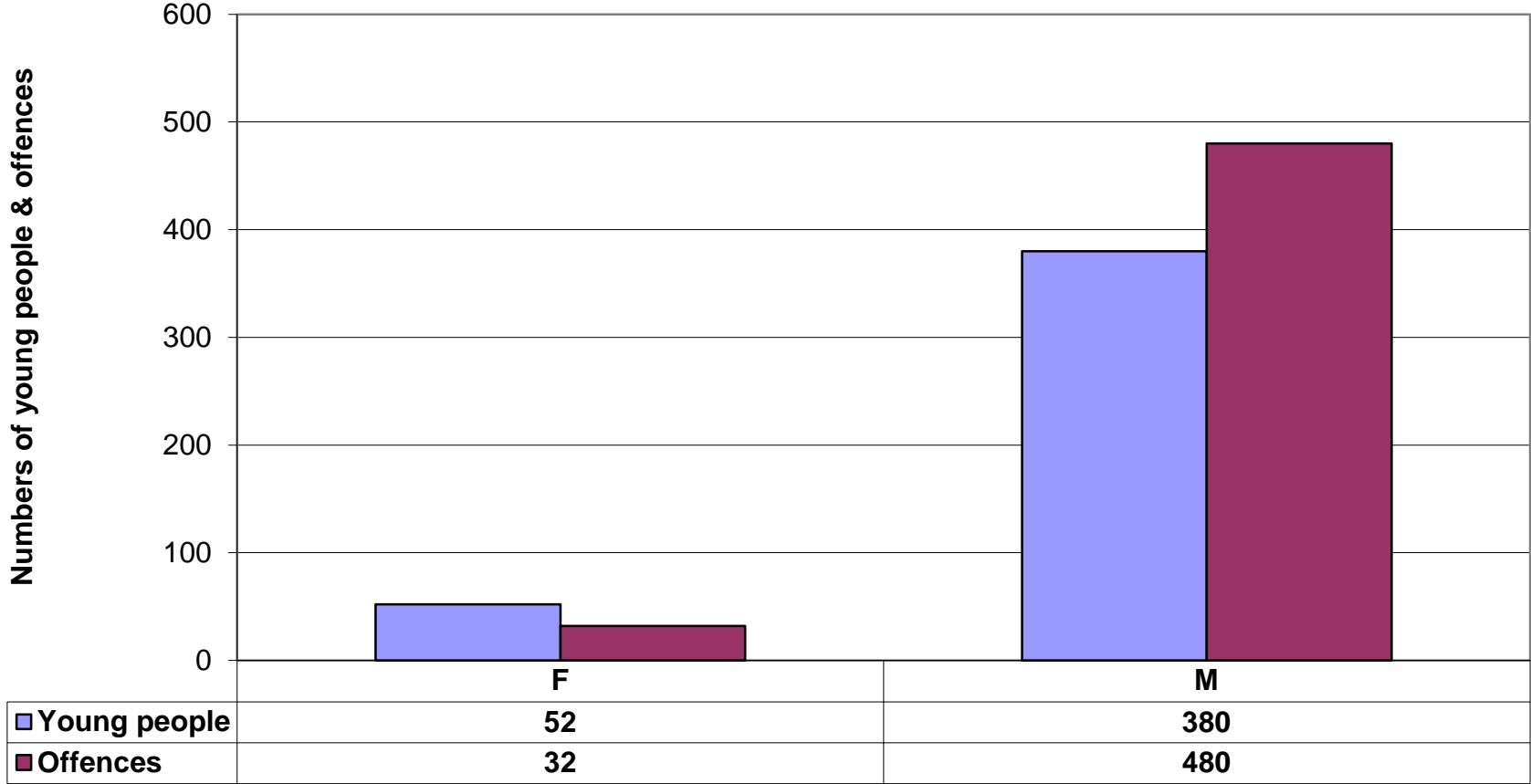


	10 to 13	14	15	16	17+
<span style="color: blue;">■</span> Young People	31	54	90	123	135
<span style="color: maroon;">■</span> Offences	62	64	102	107	179

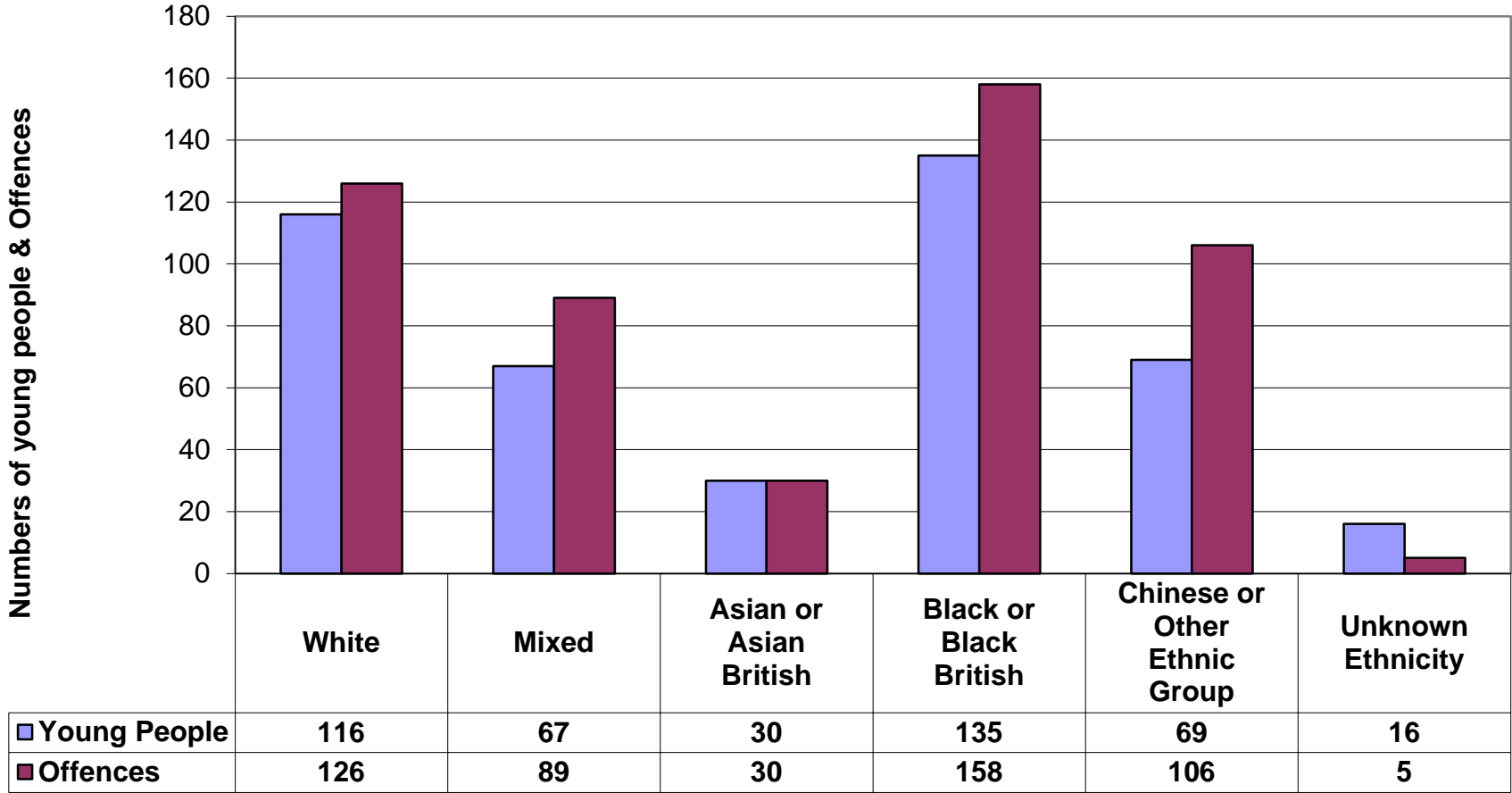
Age

# Gender & Re-offending

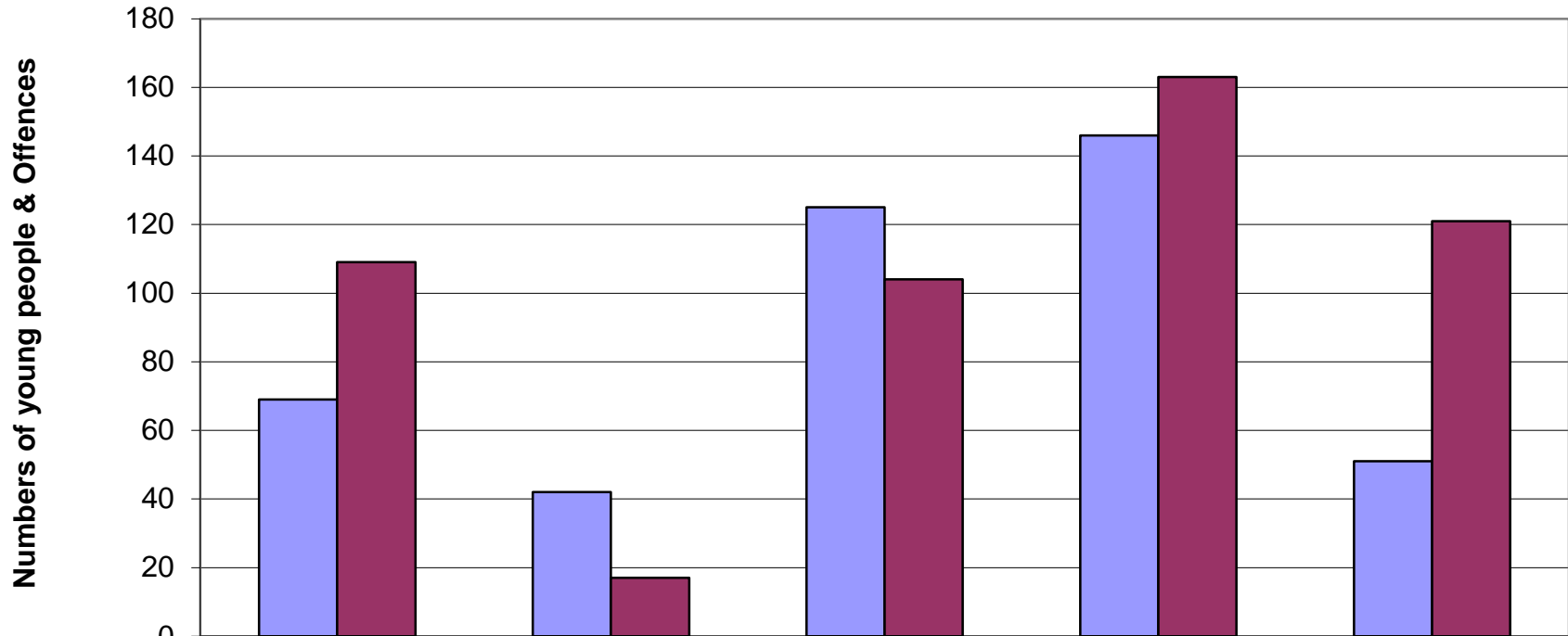
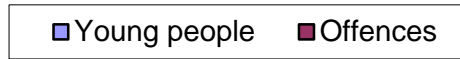
Young people   Offences



# Ethnicity & Re-offending



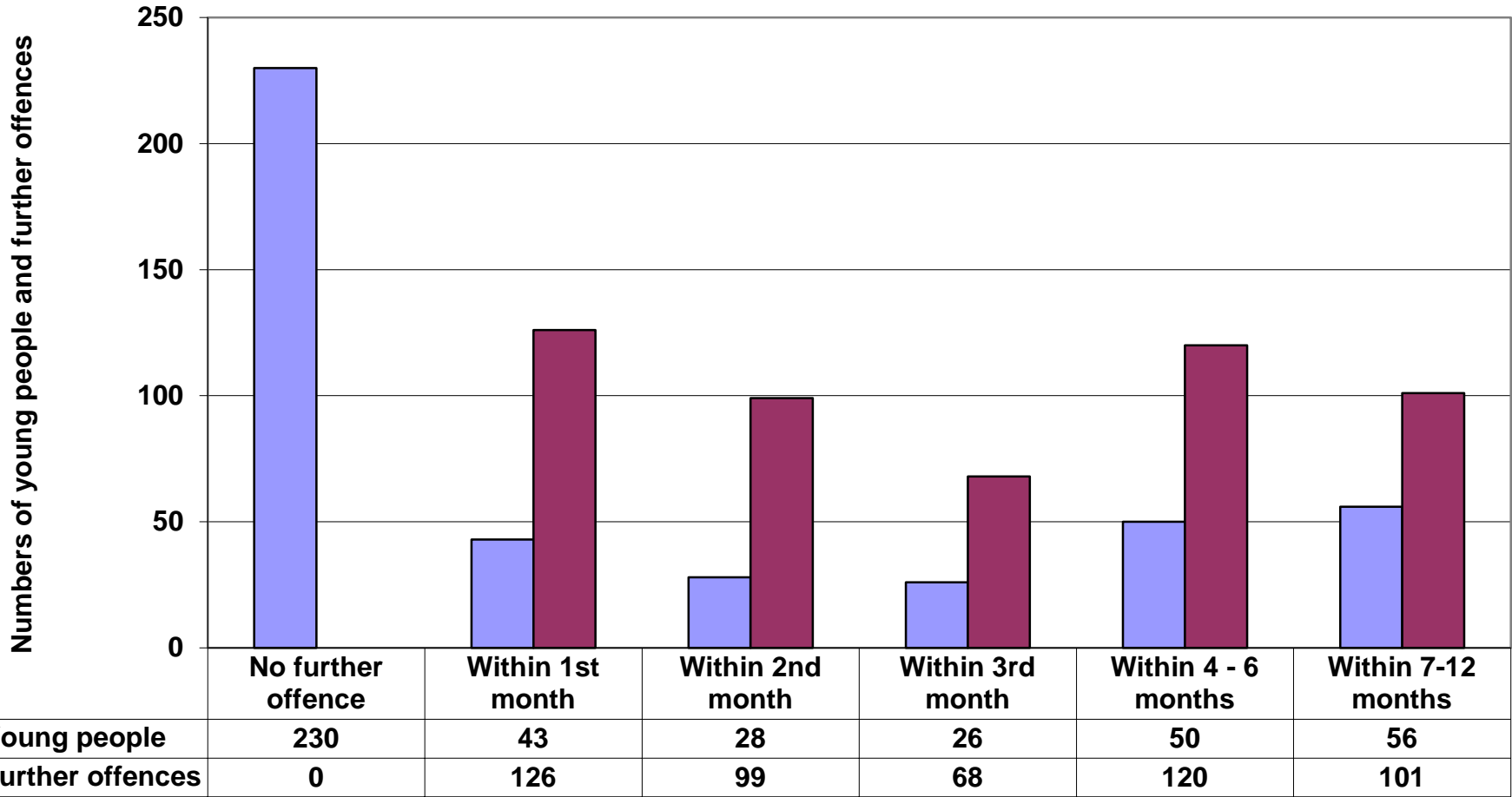
## Re-offending & Asset Band (Dynamic scores only)



	No Intervention	No Asset Recorded	1 - 14	15 - 25	26 - 48
Young people	69	42	125	146	51
Offences	109	17	104	163	121

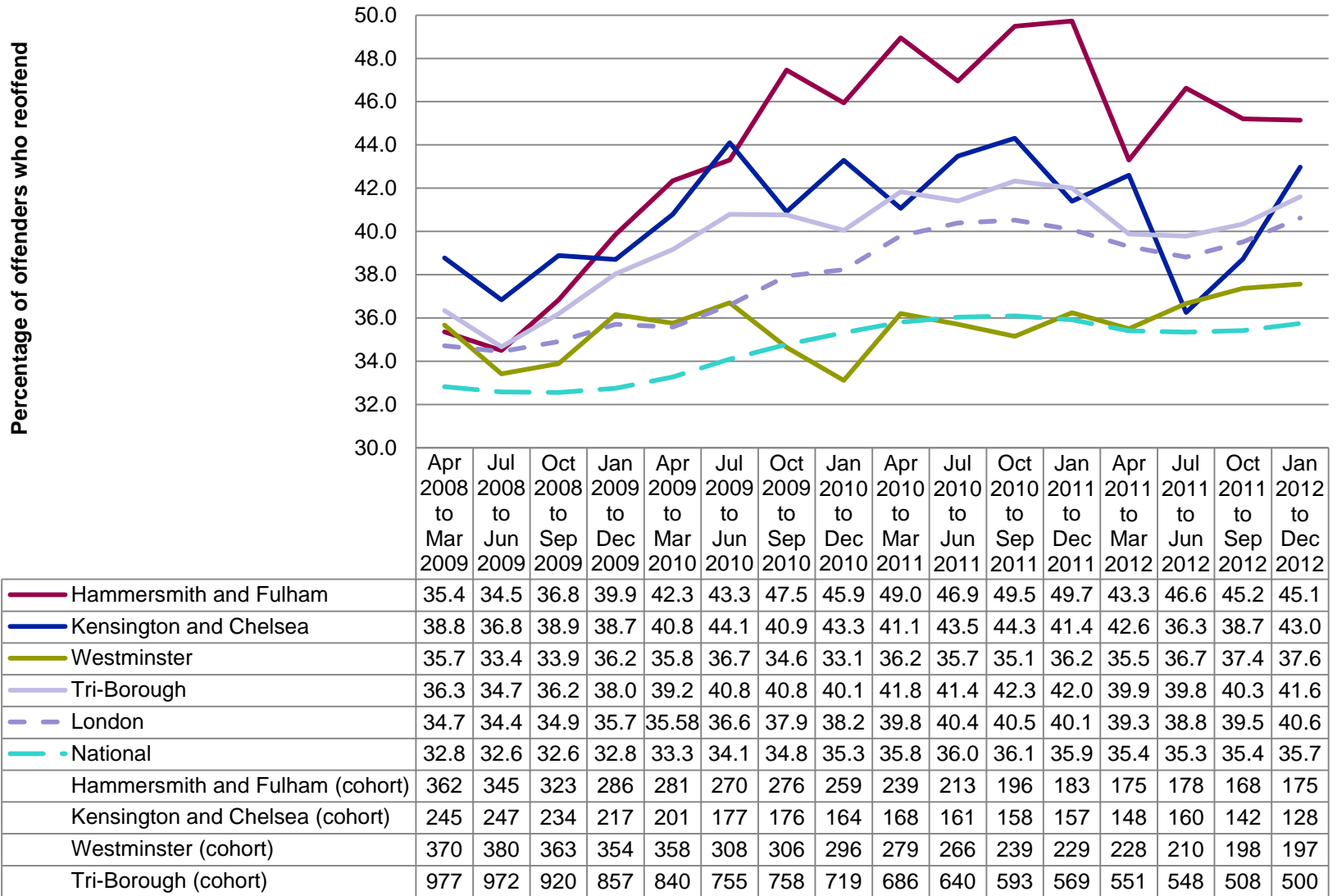
## Point at which 1st further offence occurs and eventual total further offending

■ Young people
 ■ Further offences

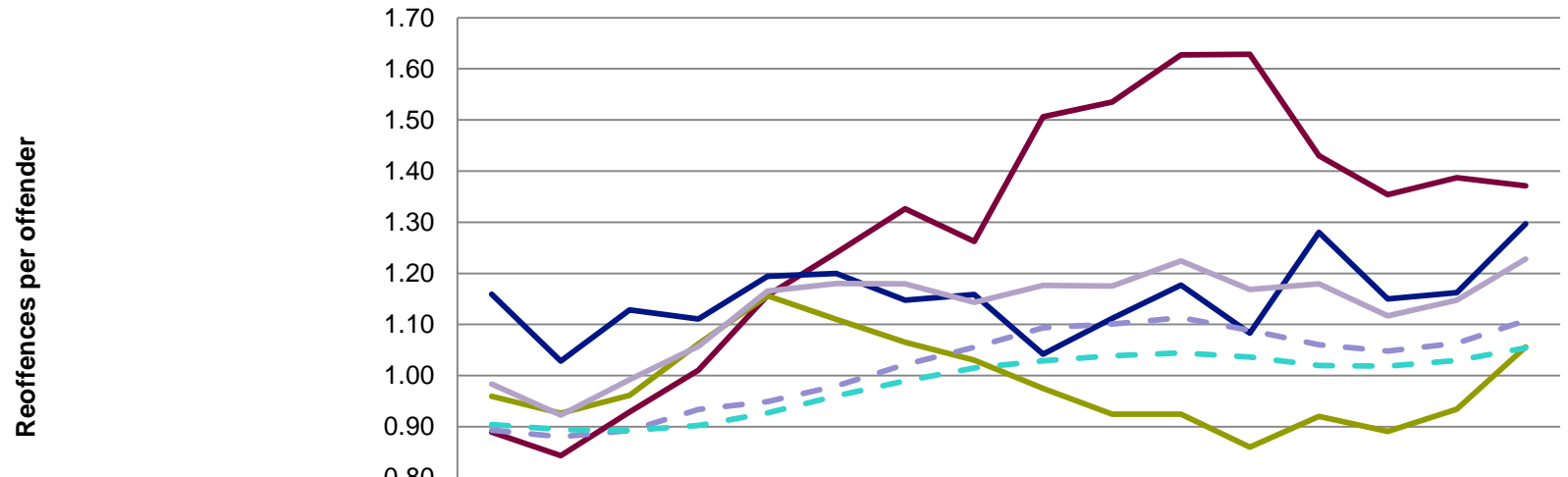




# Historical chart – proportion of reoffenders (%)

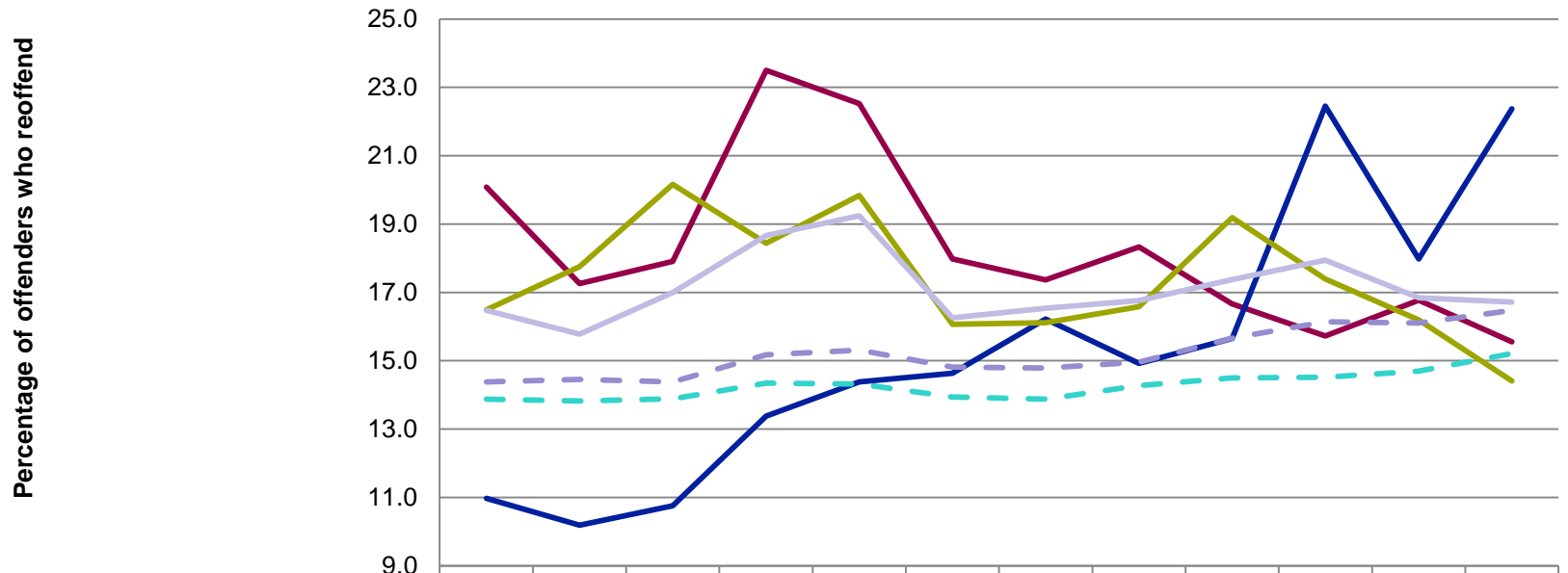


# Historical chart – reoffending frequency



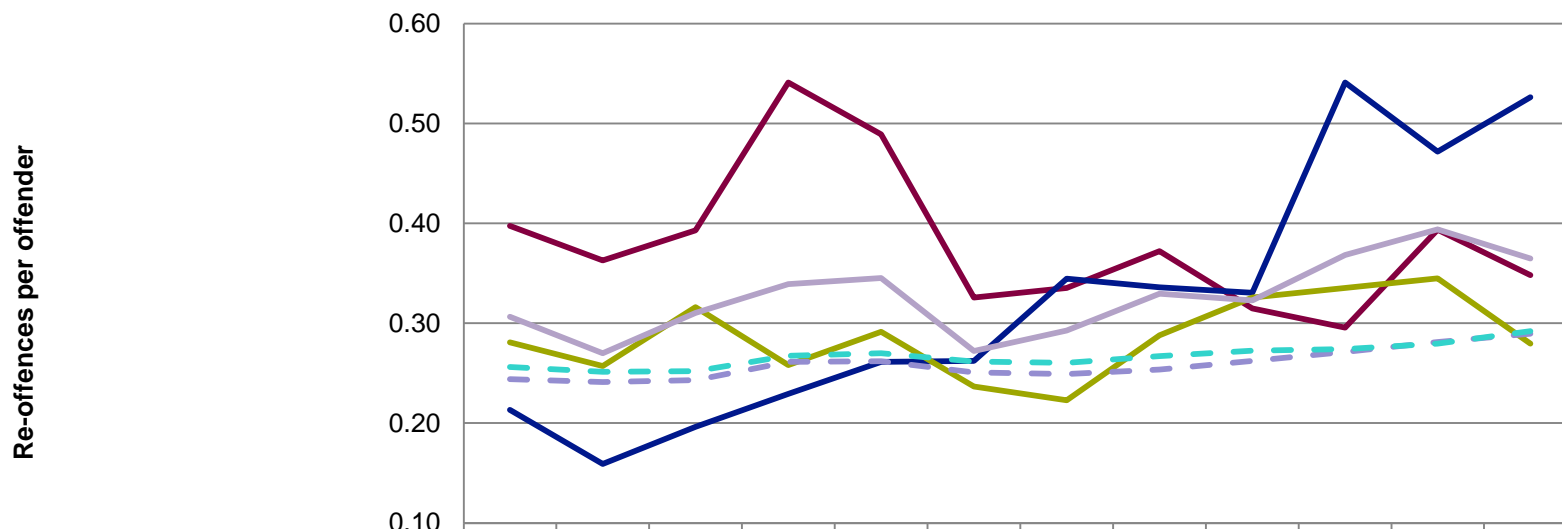
	Apr 2008 to Mar 2009	Jul 2008 to Jun 2009	Oct 2008 to Sep 2009	Jan 2009 to Dec 2009	Apr 2009 to Mar 2010	Jul 2009 to Jun 2010	Oct 2009 to Sep 2010	Jan 2010 to Dec 2010	Apr 2010 to Mar 2011	Jul 2010 to Jun 2011	Oct 2010 to Sep 2011	Jan 2011 to Dec 2011	Apr 2011 to Mar 2012	Jul 2011 to Jun 2012	Oct 2011 to Sep 2012	Jan 2012 to Dec 2012
— Hammersmith and Fulham	0.89	0.84	0.93	1.01	1.16	1.24	1.33	1.26	1.51	1.54	1.63	1.63	1.43	1.35	1.39	1.37
— Kensington and Chelsea	1.16	1.03	1.13	1.11	1.19	1.20	1.15	1.16	1.04	1.11	1.18	1.08	1.28	1.15	1.16	1.30
— Westminster	0.96	0.93	0.96	1.06	1.16	1.11	1.07	1.03	0.97	0.92	0.92	0.86	0.92	0.89	0.93	1.06
— Tri-Borough	0.98	0.92	0.99	1.06	1.17	1.18	1.18	1.14	1.18	1.18	1.22	1.17	1.18	1.12	1.15	1.23
— London	0.89	0.88	0.89	0.93	0.95	0.98	1.02	1.06	1.09	1.10	1.11	1.09	1.06	1.05	1.06	1.11
— National	0.90	0.89	0.89	0.90	0.93	0.96	0.99	1.02	1.03	1.04	1.04	1.04	1.02	1.02	1.03	1.05
Hammersmith and Fulham (offences)	322	291	300	289	325	335	366	327	360	327	319	298	250	241	233	240
Kensington and Chelsea (offences)	284	254	264	241	240	213	202	190	175	179	186	170	190	184	165	166
Westminster (offences)	355	352	349	376	414	343	326	305	272	246	221	197	210	187	185	208
Tri-Borough (offences)	961	897	913	906	979	891	894	822	807	752	726	665	650	612	583	614

# 3 month early estimates – 1 year nearer the present time (%)



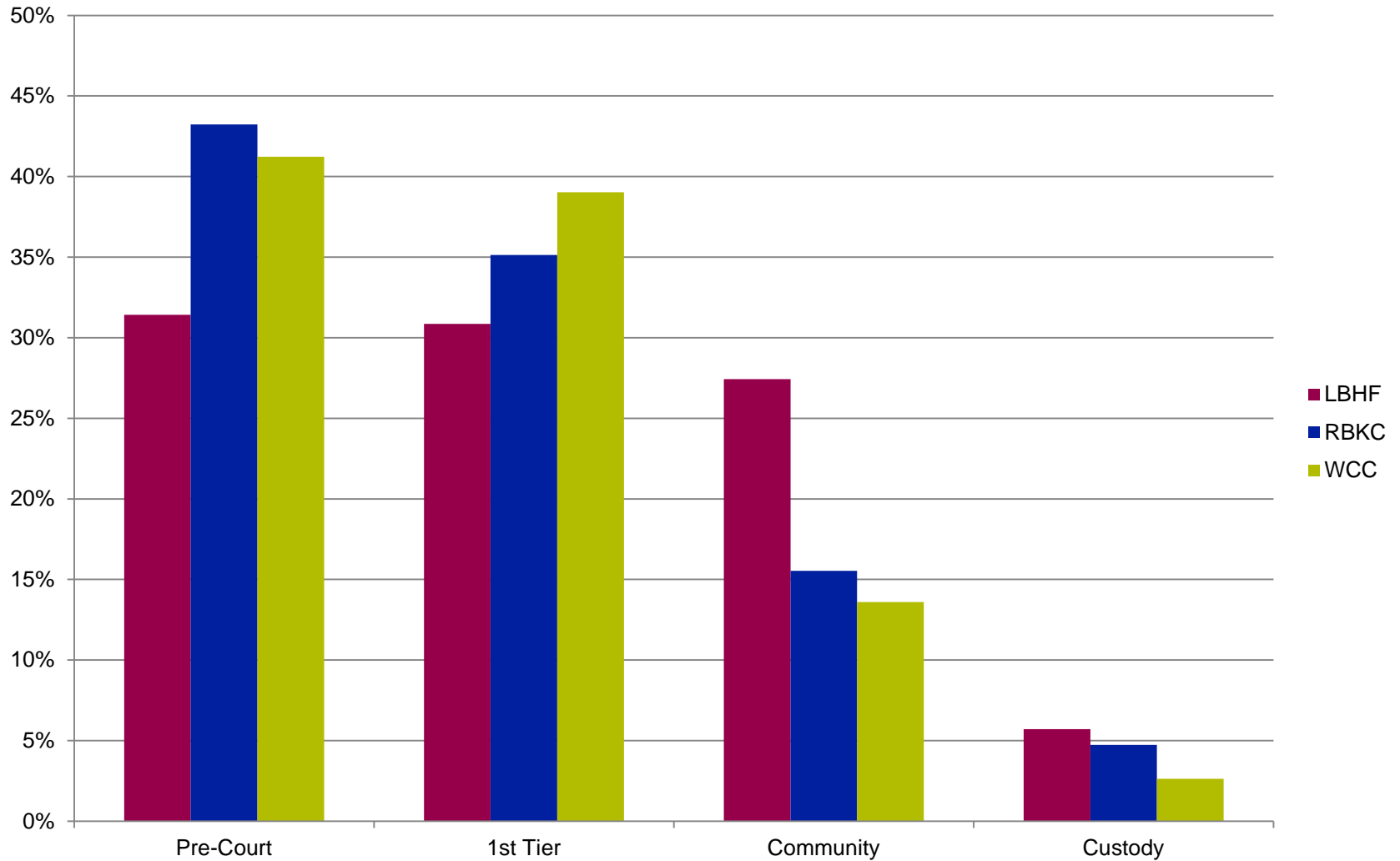
	Apr 2010 to Mar 2011	Jul 2010 to Jun 2011	Oct 2010 to Sep 2011	Jan 2011 to Dec 2011	Apr 2011 to Mar 2012	Jul 2011 to Jun 2012	Oct 2011 to Sep 2012	Jan 2012 to Dec 2012	Apr 2012 to Mar 2013	Jul 2012 to Jun 2013	Oct 2012 to Sep 2013	Jan 2013 to Dec 2013
— Hammersmith and Fulham	20.1	17.3	17.9	23.5	22.5	18.0	17.4	18.3	16.7	15.7	16.8	15.6
— Kensington and Chelsea	11.0	10.2	10.8	13.4	14.4	14.6	16.2	14.9	15.7	22.4	18.0	22.4
— Westminster	16.5	17.8	20.2	18.4	19.8	16.1	16.1	16.6	19.2	17.4	16.2	14.4
— Tri-Borough	16.5	15.8	17.0	18.7	19.2	16.3	16.5	16.8	17.4	17.9	16.8	16.7
- - London	14.4	14.5	14.4	15.2	15.3	14.8	14.8	15.0	15.7	16.1	16.1	16.5
- - National	13.9	13.8	13.9	14.3	14.3	13.9	13.9	14.3	14.5	14.5	14.7	15.2
Hammersmith and Fulham (cohort)	249	226	201	183	182	178	167	180	162	159	155	135
Kensington and Chelsea (cohort)	164	157	158	157	153	164	148	134	115	98	89	76
Westminster (cohort)	285	276	253	244	247	224	211	205	172	161	142	118
Tri-Borough (cohort)	698	659	612	584	582	566	526	519	449	418	386	329

## 3 month early estimates – frequency



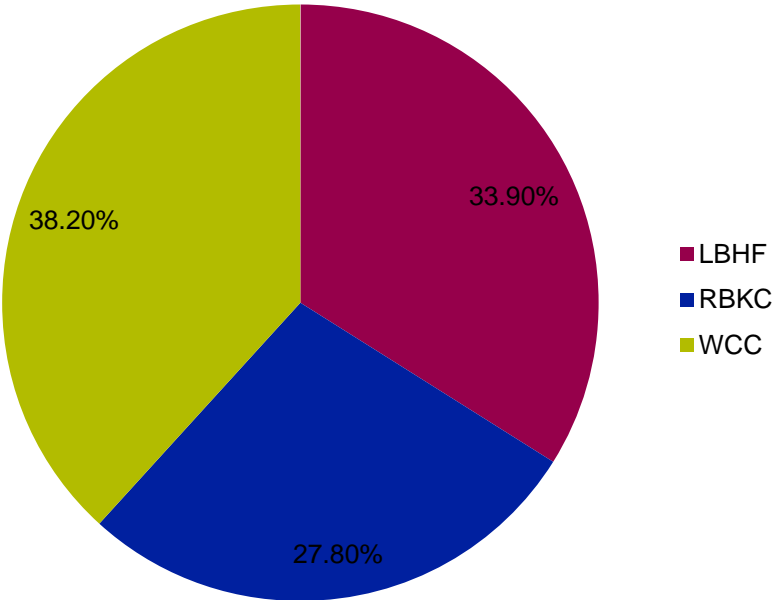
	Apr 2010 to Mar 2011	Jul 2010 to Jun 2011	Oct 2010 to Sep 2011	Jan 2011 to Dec 2011	Apr 2011 to Mar 2012	Jul 2011 to Jun 2012	Oct 2011 to Sep 2012	Jan 2012 to Dec 2012	Apr 2012 to Mar 2013	Jul 2012 to Jun 2013	Oct 2012 to Sep 2013	Jan 2013 to Dec 2013
— Hammersmith and Fulham	0.40	0.36	0.39	0.54	0.49	0.33	0.34	0.37	0.31	0.30	0.39	0.35
— Kensington and Chelsea	0.21	0.16	0.20	0.23	0.26	0.26	0.34	0.34	0.33	0.54	0.47	0.53
— Westminster	0.28	0.26	0.32	0.26	0.29	0.24	0.22	0.29	0.33	0.34	0.35	0.28
— Tri-Borough	0.31	0.27	0.31	0.34	0.35	0.27	0.29	0.33	0.32	0.37	0.39	0.36
— London	0.24	0.24	0.24	0.26	0.26	0.25	0.25	0.25	0.26	0.27	0.28	0.29
— National	0.26	0.25	0.25	0.27	0.27	0.26	0.26	0.27	0.27	0.27	0.28	0.29
Hammersmith and Fulham (offences)	99	82	79	99	89	58	56	67	51	47	61	47
Kensington and Chelsea (offences)	35	25	31	36	40	43	51	45	38	53	42	40
Westminster (offences)	80	71	80	63	72	53	47	59	56	54	49	33
Tri-Borough (offences)	214	178	190	198	201	154	154	171	145	154	152	120

# Reoffending cohort numbers by disposal tier and Local Authority

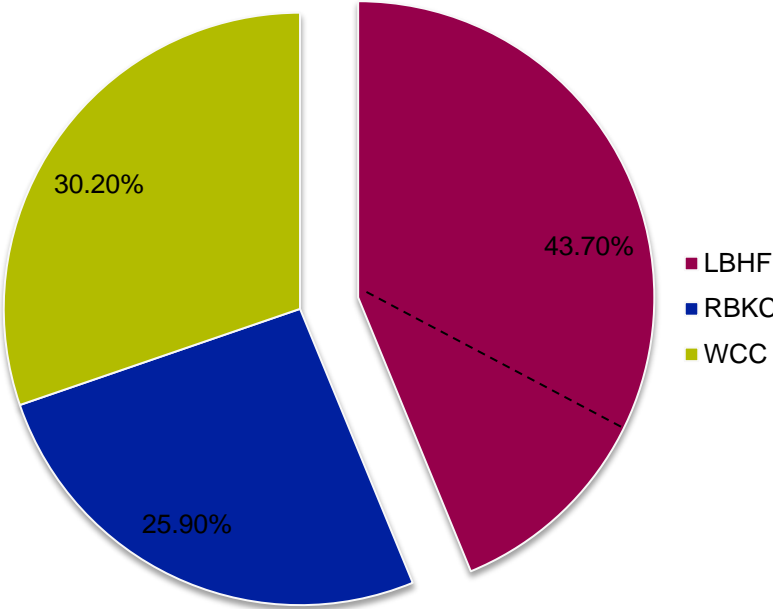


# Youth population and triage/diversion cases

## 10-17 Population



## Triage Programmes



# Tri-borough Reoffending Report

The screenshot shows a web browser window with the following elements:

- Browser Tabs:** http://facs-yotl/Reports\_SQL2008/Pages/Report.aspx?ItemPath=%2fYOTLive%2fClients?, Secure Access SSL VPN - ..., Report Manager, New Tab.
- Page Title:** SQL Server Reporting Services
- Breadcrumbs:** Home > YOTLive > Clients > Report Designer > More >
- Section Header:** Reoffending
- Navigation:** Home | My Subscriptions | Site Settings | Help
- Search:** Search for: [input field]
- View Options:** View | Properties | History | Subscriptions
- Form Fields:**
  - Cohort Start: 01/04/2013
  - Cohort End: 31/03/2014
  - Offence Status: (Select All), Proven, Pending, Cleared
- Action:** View Report button
- Taskbar:** Windows taskbar with icons for Internet Explorer, File Explorer, and other applications. System tray shows the date 13/11/2014 and time 22:34.



THE ROYAL BOROUGH OF  
KENSINGTON  
AND CHELSEA



City of Westminster

London Borough of Hammersmith & Fulham | The Royal Borough of Kensington and Chelsea | Westminster City Council

# TRI-BOROUGH YOUTH OFFENDING SERVICES

